

TECHNICAL FEATURES

- Double parallelogram articulated boom (two elements) + telescopic boom (main boom + two extensions)
- Pantograph operation by connecting rods
- 360° bearing turret rotation
- Ground and basket electro-hydraulic controls
- Ground and basket vehicle motor start and stop functions
- Aluminium antiskid flatbed with tool tray walls
- Aluminium basket, dimensions mm 1400 x 700 x 1100
- Hydraulic basket rotation 75° right + 75° left
- Basket levelling with hydraulic parallelogram system
- Load sensor to check the load on the basket
- No. 4 hydraulic out-shape outriggers with ground sensors
- Hydraulic system powered by a gear pump installed on the vehicle power takeoff
- 220 V AC CE outlet in the basket
- No. 1 flashing beacon
- Buzzer when power takeoff is coupled
- Hour meter in the cab
- Standard painting in blue RAL 5017 or white RAL 9010
- EC declaration of conformity

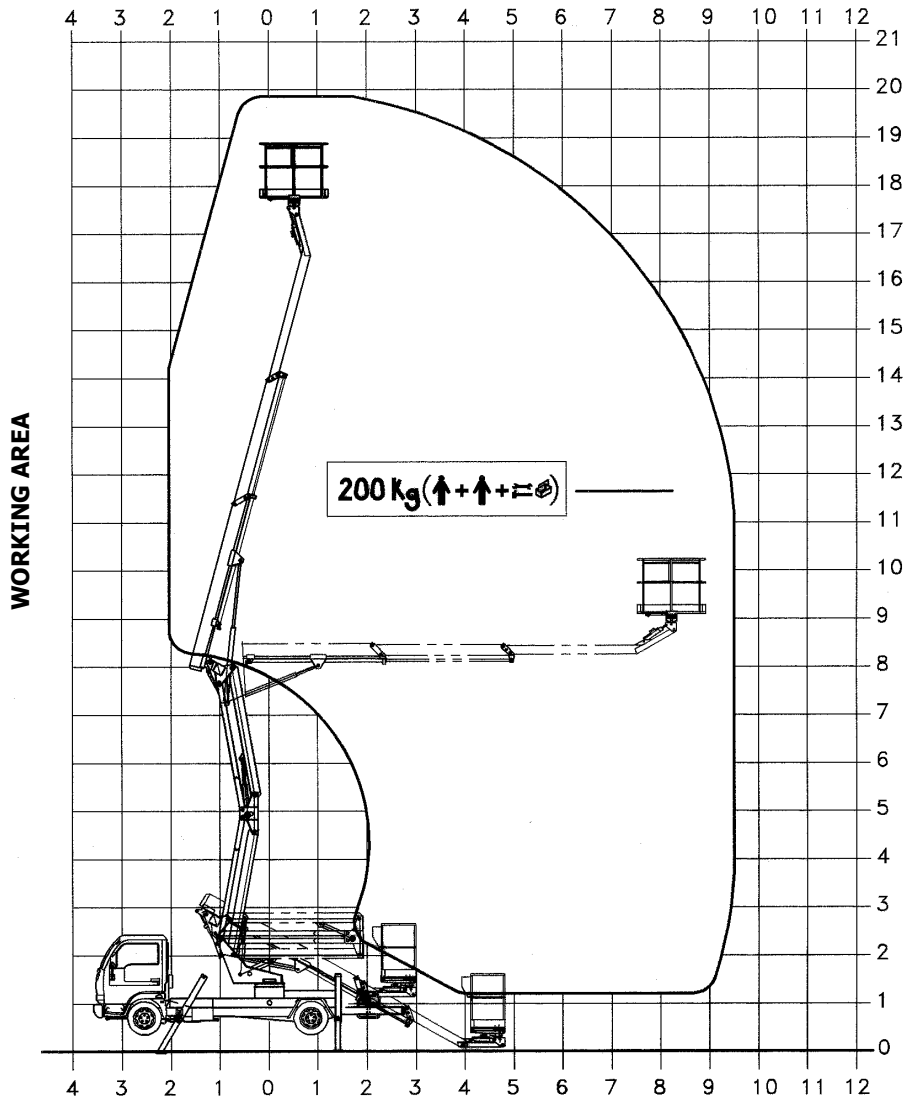
PERFORMANCES

- Working height 19.8 m
- Platform height 17.8 m
- Load capacity 200 kg
- Working outreach some 9.5 m
- The platform can be installed on a truck with a total weight of 3500 daN, wheel base 3400 mm

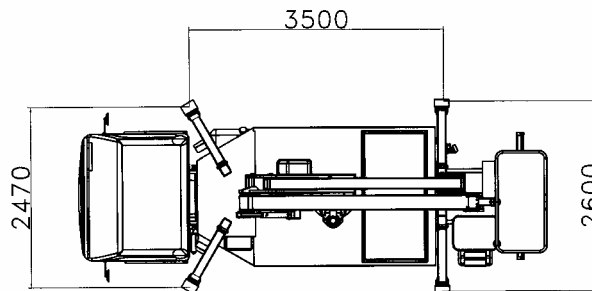
ACCESSORIES

- Non-standard painting
- Tolls drawer
- Air/water pipe in the basket

Product specifications are subject to change without notice or obligation. Technical features and drawings in this brochure are for illustrative purposes only.



**MAX DEPLOYED
OUTRIGGERS
AREA**



ARTICULATED-TELESCOPIC PLATFORM

CTE S.p.A. Head Offices and Factory

Via Caproni, 7
 38068 ROVERETO (TN) - Italy
 Tel. +39/0464/485050
 Fax +39/0464/485099
 e-mail: info@ctelift.com
 web: <http://www.ctelift.com>