

RUTHMANN
HIGHquality



A flagship among the STEIGER®.

As a rental company for hydraulic aerial platforms you also want to satisfy customers, who e.g. in connection with their maintenance and repair work must reach working places in almost 70 metres working height or who would like to completely use a working range with a width of up to 70 metres during cleaning façades.

The **RUTHMANNSTEIGER® TU 700** was especially designed for these great requirements. You can reach with this machine a working height of 69,70 metres, with a large lateral outreach to either side of up to 34,00 metres. The working cage of 2,30 x 0,90 metres is a very roomy one.

For larger operations, during which several persons and heavy tools must be carried, you can extend the cage up to 3,70 x 0,90 metres. Also then the high carrying capacity of 360 kg grants you the necessary safety.



The articulated top boom Rüssel® (cage lifting arm) provides you with its swivelling angle also under difficult work conditions the necessary moveability to reach your object even over obstacles without any difficulties. With the additional telescopic extension of the Rüssel® by 3,50 metres you get flexibility and manoeuvrability of the extra-class.

The versatile applications for this STEIGER® will soon be recognizable for you also thanks to the low own weight of under 33.000 kg on a standard 3-axle-carrier-chassis with trailing axle. With this „weight class“ you can make this machine available for the unrestricted use within road traffic – also at weekends.

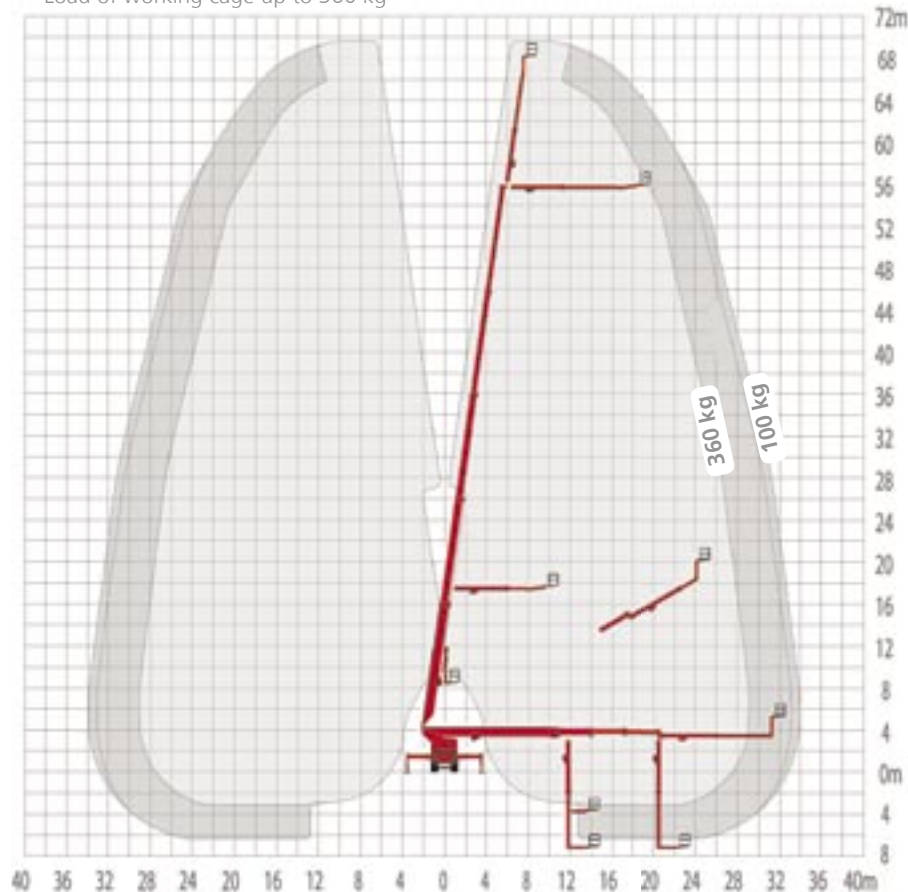
For reduction of the jacked width you can also extend the four horizontal-vertical stabilizing jacks unilaterally. Under very confined conditions the stabilizing jacks may also be extended within the vehicle profile.

Contact us – by phone, fax or E-mail. We would be pleased to give you detailed information concerning the performance spectrum of our proven STEIGER® and demonstrate profit and advantages arising for you.

RUTHMANNSTEIGER® TU 700

Working height:	69,70 m
Lifting height:	67,70 m
Lateral outreach:	34,00 m*
Range of rotation:	450°
Swivelling angle of articulated top boom Rüssel®:	180°
Size of working cage:	2,30 x 0,90 m
to be extended up to:	3,70 x 0,90 m
Carrying capacity of working cage:	360/200 kg
Telescopic extension:	38,40 m
plus telescopic extension of Rüssels®:	3,50 m
Permissible siting inaccuracy:	0°
Total height:	4,00 m
Perm. total weight:	from 32.000 kg (33.000 kg)

Load of working cage up to 360 kg



All dimensions in meters. All measurements and weights are approximate and refer to the standard basic execution. Technical alterations reserved. Steiger®, Gelenksteiger®, and Rüssel® are registered trademarks of Anton Ruthmann GmbH & Co. KG

* Depending on load and execution

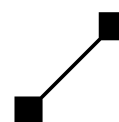


Anton Ruthmann GmbH & Co. KG

P.O.Box 12 63
D-48705 Gescher-Hochmoor

Fon: +49 (0) 28 63/2 04-0
Fax: +49 (0) 28 63/2 04-2 12

Internet: www.ruthmann.de
E-mail: export@ruthmann.de



RUTHMANN
HIGHquality